

SAMSUNG

SAMSUNG ELECTRONICS CANADA, INC.

HEADQUARTERS

7037 Financial Drive, Mississauga, Ontario, Canada L5N 6R3
TEL: 1-905-542-3535
www.samsung.ca

SERVICE DIVISION

7037 Financial Drive, Mississauga, Ontario, Canada L5N 6R3
1-800-SAMSUNG (1-800-726-7864)

AH68-01633S(Rev 0.0)

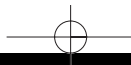
YP-T6

SAMSUNG



- MP3, WMA, ASF, Secure WMA and Ogg Playback
- Removable Storage Device
- Direct MP3 Recording
- FM Reception
- 3D Sound
- USB 2.0 Support
- Upgradable
- 20 Hours of Continuous Play
- Voice Recording Function

YP-T6



Contents

Contents

Preparations

Safety Instructions.....	4
Features	6
Components	8
Location of Controls	9

Connection to Computer

Connecting the player to PC	11
Manual Installation of USB Driver	15
Using the removable storage(PC)	18
● Formatting on your PC	18
● Downloading/Uploading files	18
● Disconnecting the USB cable.....	19
● Downloading Secure WMA Files	20
Installing Music Studio.....	22
Using Music Studio	23
To View Help on Music Studio	27

Basic Usage

Playing Music and Turning Off the Device	28
Hold Function	29
Recording Voice	29
MP3 Encoding.....	30
Searching for Music/Voice Files	31
Listening to FM Radio	32
FM Encoding	34

Additional Usage

Loop Repeating.....	34
MENU Options	35

Additional Usage

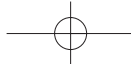
Using Navigation	36
Setting Playlist.....	39
Setting the Advanced Functions	40
Selecting the Play mode	41
Setting the EQ mode.....	42
● Preset EQ	42
● Bass Booster	42
● WOW Set	43
● User EQ Set.....	44
Display Settings.....	45
● Scroll Speed.....	45
● Display Time.....	45
● Backlight.....	46
● Contrast	46
● Tag	47
● Language	47
Setting the System	48
Record Settings.....	50
Time Settings.....	51
Managing Files	52

Appendix

MENU Table	53
------------------	----

Customer Support


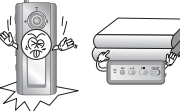
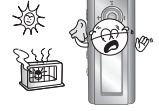


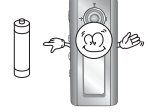
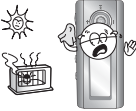


Troubleshooting.....	54
Specifications	56
Safety Information	58
Warranty	60



Safety Instructions

Safety Instructions

Read and understand all the instructions to avoid injury to yourself and damage to the equipment.

<p>Do not expose to extreme temperatures (above 95°F or below 23°F). Do not expose to moisture.</p> 	<p>Do not subject the unit to severe impact, or place heavy objects on it.</p> 	<p>Do not let any foreign matter spill into the device.</p> 
<p>Be careful not to subject the player to excessive pressure when wearing it round your neck.</p> 	<p>Do not expose to chemicals such as benzene and thinners.</p> 	<p>Remove batteries when the device is left unused for a long period of time.</p> 
<p>Do not expose to direct sunlight or heat sources.</p> 	<p>Do not store in dusty areas.</p> 	<p>Do not try to disassemble and repair the device yourself.</p> 

* Please be aware that we claim no responsibility for damage from data loss due to breakdown, repair or other causes.

Earphones

Follow Traffic Safety Instructions

- Do not use the earphones while driving an automobile or riding a bicycle. It's not only dangerous, but also against the law.
- To avoid an accident, do not turn up the volume of the earphones too high while walking.

Protect your ears

- Do not turn up the volume too high. Doctors warn against prolonged exposure to high volume.
- Stop using the device or turn the volume down if you have ringing in your ears.

Ambient operating conditions

- Ambient temperature : 5°C ~ 35°C (41°F ~ 95°F)
Humidity : 10 ~ 75%

Environmental Information

- Follow local guidelines for waste disposal when discarding packages, batteries, and old electronic appliances.
- Your player is packaged with cardboard, polyethylene etc., and does not use any unnecessary materials.

Features

Features

MP3, WMA, ASF, Secure WMA and Ogg Playback

- The player supports playback of MP3, WMA, ASF, Secure WMA and Ogg(Ogg Vorbis)
- * OGG is a new audio compression format that is free, open and unpatented.
For more info, see www.vorbis.com

Removable Storage Device

- You can easily copy and paste files to the player using Windows Explorer.

Direct MP3 Recording

- You can convert music from CDs, cassettes, and radio into MP3 files without a PC.

FM Reception

- Listening to an FM program is made easy with Auto Search and Frequency Memory functions.

3D Sound

- The 3D surround(SRS) feature adds spaciousness to the sound.

USB 2.0 Support

- Maximum data speed transfer of 18 Mbps.

Upgradable

- You can upgrade the built-in programs when available.
Add functions, CODEC, etc. Please check the home page (www.samsung.com) for upgrades.

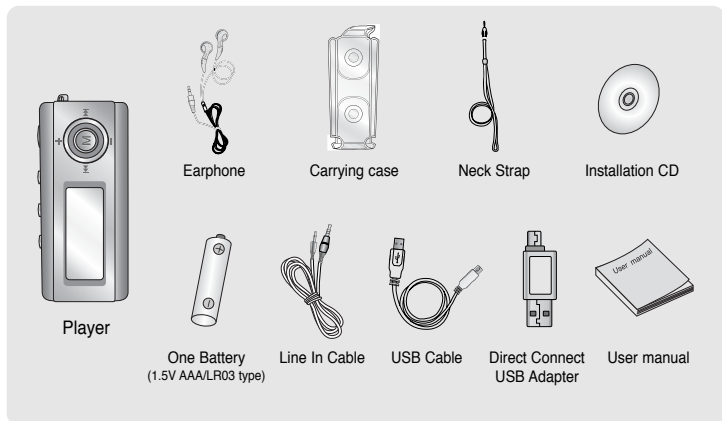
20 Hours of Continuous Play

- This player uses one AAA/LR03 alkaline battery. Operation can last up to 20hours.
Actual playing time may vary according to the type and capacity of the battery.

Voice Recording Function

- You can make high quality voice recordings.

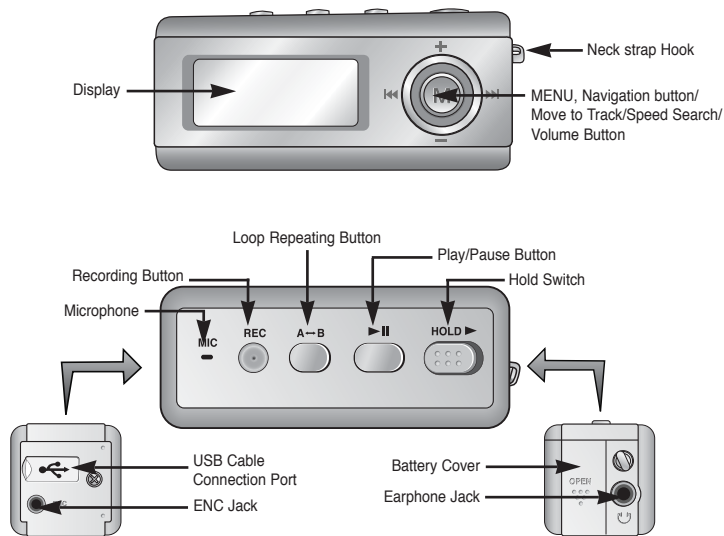
Components



Model	YP-T6 H	YP-T6 V	YP-T6 X	YP-T6 Z
Built-in memory	128MB	256MB	512MB	1GB

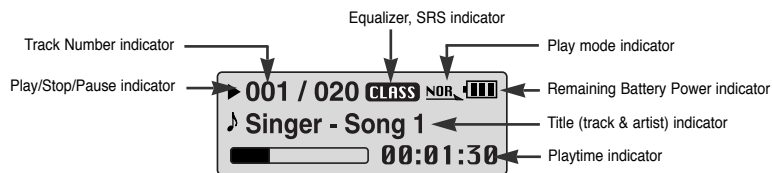
- The capacity of the useable built-in memory is less than indicated as the internal firmware uses part of the memory as well.
- The accessories' design is subject to change for the purpose of improvement, without notice.

Location of Controls



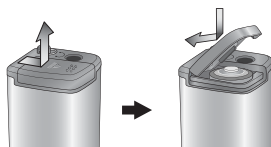
Location of Controls

Display



Inserting the Battery

- 1 Slide the cover in the direction of the arrow to open.
- 2 Insert a battery to the right poles + , - and push-close the cover in the direction of the arrow as indicated.



Note

- Do not place heavy objects on the cover.

Connecting the player to PC

System Requirements.

The PC system must meet the following specifications:

- Pentium 200MHz or greater
- Windows 98 SE/ME/2000/XP
- 40MB of available hard disc space
- CD-ROM drive
- (double speed or greater)
- USB port (2.0) supported
- VGA graphic

Note

- Install the operating system in Administrator Account (main user) for Windows 2000 or XP. Otherwise, installation will not be completed.
- Windows ME, 2000 and XP can recognize the driver without installing the provided program. However, you must install the program in order to format the player and upgrade firmware.
- If the YP-T6 program has not been installed in Windows 98, then it will not communicate with your removable disc. You must install the USB driver file first.

Before connecting the player to PC, make sure to install USB driver. If "Add New Hardware Wizard" appears, press the [Cancel] button and install the USB driver.

Installing software

- 1 Insert the Installation CD into the CD-ROM drive. Select [Install Player USB Driver].



Connecting the player to PC

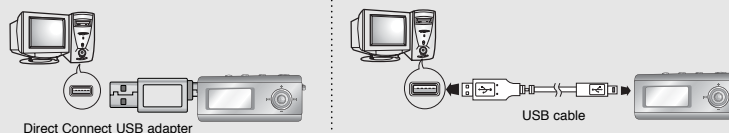
2 Follow the instructions in the window to complete the installation.



Connecting the player to PC

Connecting the player to PC with the USB cable

- 1 Connect the USB cable or Direct Connect USB adapter to the USB port on the computer.
- 2 Connect the other end of the USB cable or adapter to the USB cable connection port on the bottom of the player.
 - If you disconnect the USB cable from your PC while implementing a command or initializing during USB driver installation, your PC may not function correctly.
- 3 The USB driver is installed with a message saying that it is searching for a new device. You may not see the display screen during installation. Go to the device manager (see next page) to check that installation has been successfully completed.
- 4 Upon installation of the USB driver "Samsung YP-T6 USB Device" will appear in the [System Properties] → [Device Manager].



Connecting the player to PC

Manual Installation of USB Driver

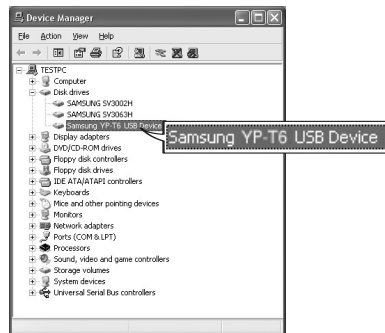
How to check USB driver

Windows 98:

Control Panel → **System** → **Device Manager** → **Disc Drives** → **Samsung YP-T6**

Windows 2000/Windows XP:

Control Panel → **System** → **Hardware** → **Device Manager** → **Disc Drives** → **Samsung YP-T6 USB Device**



5 When the USB driver is not installed automatically, refer to the next page.

Go to "Downloading/Uploading files"(p18) if the USB driver is installed.
Follow these steps if the USB driver is not installed :

When an error occurs during installation of the USB driver

1 Check the device manager.

Windows 98,ME:

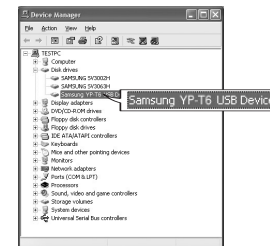
Control Panel → **System** → **Device Manager**

Windows 2000:

Control Panel → **System** → **Hardware** → **Device Manager**

Windows XP:

Control Panel → **System** → **Hardware** → **Device Manager**



2 Check if there is a device listed with an exclamation point or a question mark (displayed as unknown device or USB device).

3 Double click on the device listed with an exclamation point or a question mark.

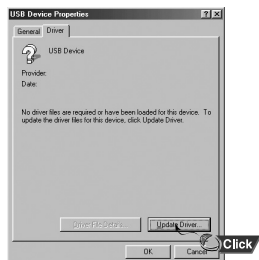
Note

- If you are using Windows 2000 and your version of Windows does not recognize the USB driver please download and install the latest service pack from windowsupdate.microsoft.com
- The installation method may vary depending on the type of PC or operating system. Contact your PC dealer or service center for installation information.
- If errors occur continuously when you install the USB driver, reconnect the USB cable after rebooting your system.

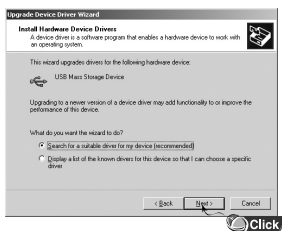
Manual Installation of USB Driver

Manual Installation of USB Driver

4 After selecting the driver, click [Update Driver].



6 Select [Search for a suitable driver for my device] and then click [Next].



5 Click [Next].

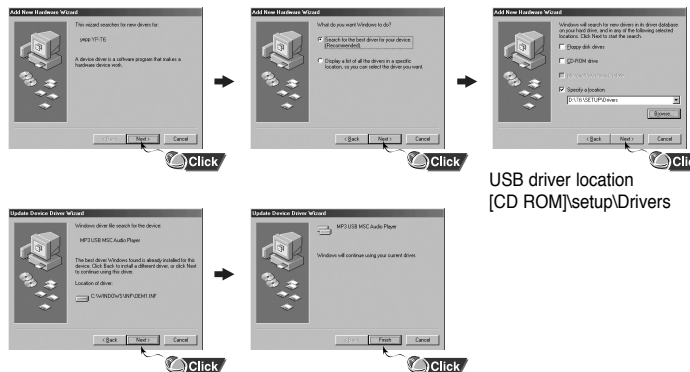


7 Click [Next] to finish.



In Windows 98

Follow the instructions in the window to complete the installation.



USB driver location
[CD ROM]\setup\Drivers

: You must reboot your computer to complete the installation.

Note

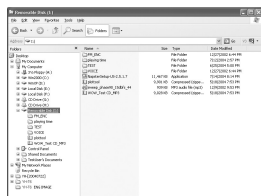
- You cannot use the player as a removable disc in Windows 98 if the YP-T6 program is not installed. Make sure to install the USB driver file first.

Using the removable storage(PC)

Using the removable storage(PC)

Formatting on your PC

1 Select the removable disc icon and click the right mouse button to select [Format].



2 Press the [Start] button.

- All saved files will be formatted.
- You can change the name of removable disc by selecting [Volume label].



Note

- By formatting, all previously preset menus will be reset, and any pre-existing song or data files will be erased.
- Care must be taken as formatted files can not be recovered.

Downloading/Uploading files

1 Connect the player to your PC with the supplied USB cable.

2 Open Windows Explorer on your PC.

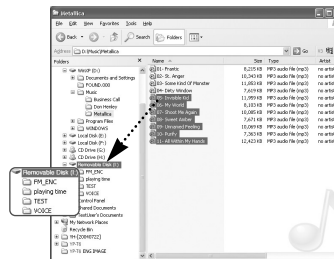
- Removable Disc is displayed in Windows Explorer.

3 Select the file to save and drag-and-drop it into the removable disc icon. (Files will appear in numerical, alphabetical order)

- If you change the name of music files in Windows Explorer to 001* ** , 002* ** ..., music files will be played in the order of number indicated.

Notice

- The "WRITING/READING" message will appear during file download or upload. Disconnecting the USB cable while "WRITING/READING" is displayed may cause malfunction of the unit.
- The music file order displayed in Windows Explorer may differ from the play order on your device.



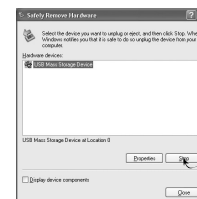
Disconnecting the USB cable

After completing the file transfer, you must disconnect the cable in the following way:

1 Double-click on the green arrow in the taskbar on the bottom right of the window.



2 When the [Stop a Hardware device] message appears, press the [OK] button and disconnect the USB cable.



Using the removable storage(PC)

1 Downloading Secure WMA Files

Make sure to download the Secure WMA file you purchased from a *pay site through Windows Media Player Version 9 or higher.

*pay site :

www.walmart.com, www.buymusic.com, www.musicnow.com, www.napster.com, etc.

1 Select the Secure WMA file and right-click to select [Play] or [Play with Media Player].



Using the removable storage(PC)

2 Click [Copy to CD or Device] from the left menu.

The list of songs selected in step 1 will appear in the left window.

Click the down arrow under [Items on Device] in the right window to change it to [Removable Disk] and then press the **Copy** button on the upper part to download the selected file.



3 Make sure to use Media Player 9.0 or higher to play Secure WMA files downloaded from a pay site.

Click the [Check for Player Updates] button in the Help menu to update the player to the latest version.



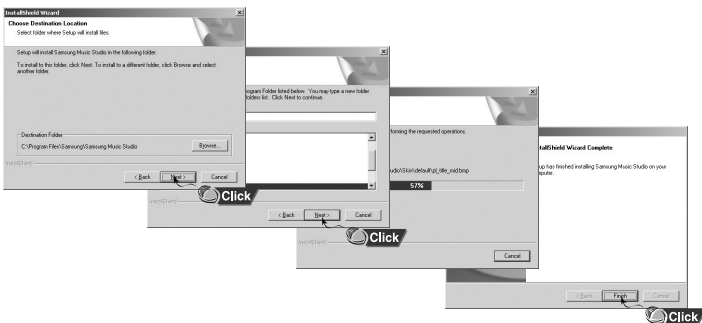
Installing Music Studio

Music Studio is a program that enables you to play back music files on your PC.

- 1 Insert the Installation CD into CD-ROM drive. Select [Install Samsung Music Studio].
- 2 Select language



- 3 Follow the instructions in the window to complete the installation.
 - Please refer to Help for more information on how to use Music Studio.



Using Music Studio

Playing Music

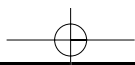
- 1 Double click the Music Studio icon on your PC.



- 2 Click the [Open Files] button in the main window to open the [Open] dialog box and select the music files you want to play back. Then click the [Open] button.

- The Selected files are automatically played back.



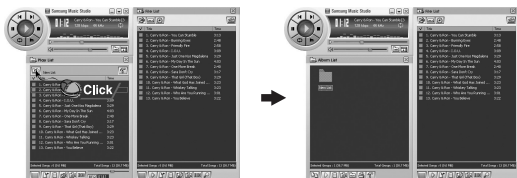


Using Music Studio

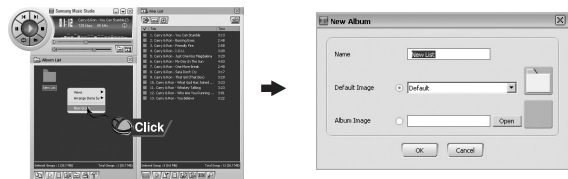
Using Music Studio

Creating an Album

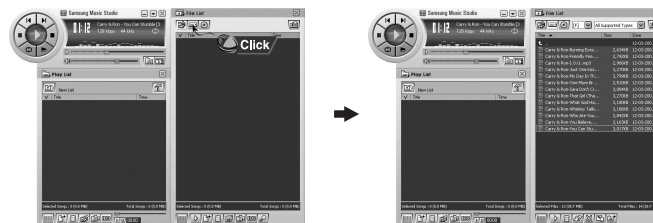
- 1 Double click the Music Studio icon on your PC.
- 2 Click the [To Album List] button in the Play List Window.
 - The Album List Window appears.



- 3 Click your right mouse button to select [New Group] which opens the [New Album] dialog box. Assign a new name and an image for the new album.



- 4 After creating the New Album, click the [To HDD Mode] button in the File List Window to select music files stored in your computer.

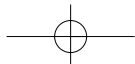


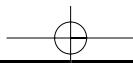
- 5 Drag and drop the selected music files into the Play List Window.



Note
 - To change the Name and Image for an Album, click the [Properties] button in the Play List Window.

Continued...





Using Music Studio

To View Help on Music Studio

Converting Music File Formats

- 1 Double click the Music Studio icon on your PC.
- 2 Insert an audio CD into your CD drive and click the [To CD-ROM Mode] button in the File List Window.



- 3 After selecting the tracks to be converted, click with the right mouse button to choose the file format.
 - The tracks are converted into the selected format.



Note

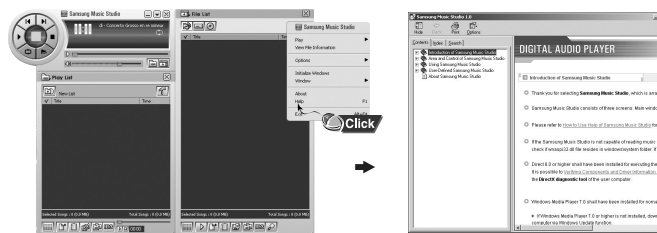
- Converted files are saved in the folder C:\My Music.

Run Music Studio and press F1.

- Help will appear.

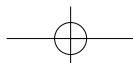
Move the arrow to the top of Music Studio and right click on the mouse. The following selection window will appear.

- Click on Help and the Help window will appear.



Note

- Music recognition technology and related data are provided by Gracenote and Gracenote CDDB® Music Recognition ServiceSM.
- CDDB is a registered trademark of Gracenote. The Gracenote logo and logotype, the Gracenote CDDB logo and logotype, and the "Powered by Gracenote CDDB" logo are trademarks of Gracenote. Music Recognition Service and MRS are service marks of Gracenote.



Playing Music and Turning Off the Device

Turning Power On and Off

Power On : Press the ►|| button to turn on the power.

Power Off : Press and hold the ►|| button to turn off the power.

Playing Music (Power On)

Press the ►|| button.

- Playback starts automatically.

Note

- USB cable must be disconnected from the player.

Pausing Music (Power Off)

Press the ►|| button to pause playback.

- If no buttons are pressed within 10 seconds (or custom settings), the player automatically powers off.
- While in Pause mode, press the ►|| button again to resume playback.

Adjusting the Volume

Push the joystick up or down to adjust the volume from 00 to 30.


Note

- If the file name is not displayed correctly, move to [Settings] → [Display] → [Language] and then change the language setting.
- WMA files can only be played as music files with a compression rate of 48Kbps-192Kbps.
- The power off time can be set in the menu. (refer to page 51)



HOLD Function

In Hold mode, all buttons are disabled.

Slide the  switch in the direction of the arrow.

* When the button is pressed, the "HOLD!" message will appear on the display.

Recording Voice

* To move to other modes from the Voice mode, refer to page 37 "Changing Mode".

- 1 Press and hold the REC button to start voice recording.
- 2 Press the REC button again to stop the recording and save the voice file.



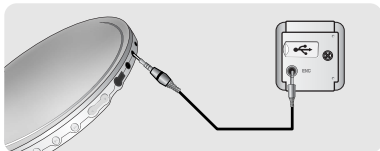
Note

- The files are recorded in the order of V001, V002,, and saved as WAV file in the VOICE folder after recording.
- If the Memory is full, Voice Recording will be disabled automatically.
- Voice Recording does not work in FM Mode or when the Line In cable is connected.

MP3 Encoding

* To move to other modes from the LINE_ENC mode, refer to page 37 "Changing Mode"

1 Connect the Audio Output port on the external audio source (or the Line Out port) to the ENC port on the device with the Line cable.



2 Press and hold the REC button to start MP3 encoding.

- If the ►|| button is pressed, encoding is paused and if the ►|| button is pressed again, the encoding resumes.

3 If the REC button is pressed during encoding, the encoding stops and an encoding file is created.

- The files are encoded in the order of L001, L002.... and saved as MP3 file in LINE_ENC folder after encoding.

Note

- Bit Rates can be set within the range of 32Kbps~128Kbps. (see page 50).
- Volume can be adjusted while monitoring the Encoding.

Notice

- Do not disconnect the Line cable during Encoding.
- If the battery is not sufficiently charged, the player will not completely encode the file.
- Adjust the volume of the external audio source to a suitable level and encode it. If the volume level is too high, the sound quality may be poor.

30

Searching for Music/Voice Files

▶ To search for specific parts during play

- Push and hold the joystick left or right during playback to search for the part you want to listen to.
- Release the joystick to resume play normally.

▶ To change tracks during play

- Push the joystick to the ►► position briefly during playback to play the next track.
- Push the joystick to the ◀◀ position briefly within 5 seconds after playback starts, to move to and play the previous track. Press the joystick to the ◀◀ position briefly after five seconds to play the current track from the beginning.

▶ To change tracks when stopped/paused

- Push the joystick left or right in stop/pause mode to move to the previous/next track.

Note

- VBR(Variable Bit Rate) file: A file that constantly changes the compression rate according to the type of sounds, such as their pitch, in the file.
- When playing a VBR file, you cannot move to and play the previous track even if you push the joystick to the ◀◀ position within 5 seconds after playback starts.
- Files that were downloaded in MP2 or MP1 and had their file extension changed to MP3 may not play.

31

Listening to FM Radio

Press the "M" button to display the menu screen.

Press the joystick down to select FM Radio and press the "M" button again.

Manual Search for a Frequency

- Push the joystick left or right briefly to search manually for the frequency you want.

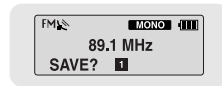


Automatic Search for a Frequency

- Push and hold the joystick left or right to search for and stop at frequencies with reception.

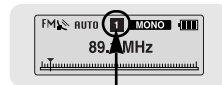
Manual Storage of a Frequency

- After searching manually for the frequency you want, press the A→B button to display the save screen.
- Push joystick left or right to select the number you want to assign to save the frequency and then press the A→B button.



Automatic Storage of a Frequency

- Press and hold the A→B button while in FM Mode.
- Frequencies within the range of 87.5MHz to 108.0MHz are automatically selected and stored.
- Frequencies are automatically stored, starting from 1.



Number of channels saved.

Note

- To exit from FM Mode press the "M" button in the center.
- Mono (MO) or Stereo (ST) is automatically selected.

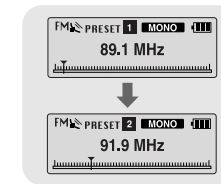
Listening to FM Radio

Searching Stored Frequencies

1 Press the "M" button in FM Mode.

- PRESET screen will appear.

2 Use ◀▶ to move to the frequency you want.



Note

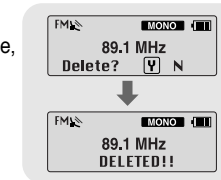
- You can store up to 20 frequencies.
- Press the "M" button in the PRESET screen to exit the PRESET mode.

Deleting Stored Frequencies

1 After moving to the PRESET number you want to delete, press and hold the A→B button.

2 After selecting the "Y", press the "M" button.

- The saved PRESET number will be deleted.



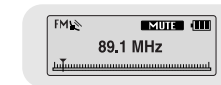
Mute Function

1 Press the ▶|| button in FM mode.

- "MUTE" is displayed and no sound is heard.

2 Press the ▶|| button again.

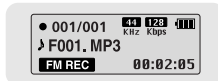
- Mute function is released.



FM Encoding

1 Press and hold the REC button during FM reception.

- Encoding of the currently transmitted FM broadcast begins.



2 Press the REC button again.

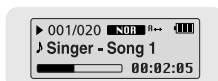
- A file is created and the encoding stops.
- Files are encoded in the order F001, F002, F003...and saved as MP3 files in FM_ENC folder.

Loop Repeating

Starting Point

While playing music files, press the A↔B button briefly at the beginning of the loop you want to set.

A↔ appears in the display.



Ending Point

Press the A↔B button briefly again to set the end of the loop.

A↔B appears in the display.

The loop is played repeatedly.



Note

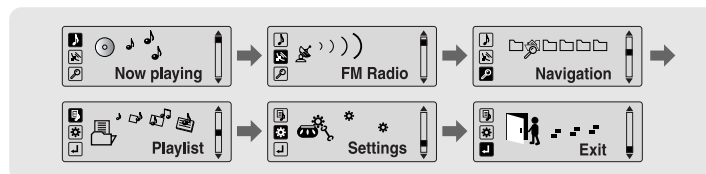
- Press the A↔B button briefly to cancel the loop.
- Loop Repeat is automatically released if you Speed Search with I◀◀, ▶▶I.

MENU Options

Press and hold the "M" button to switch to MENU mode.

Use ←, → to move and press the "M" button briefly to select the menu you want.

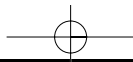
Press and hold the "M" button to exit the MENU mode.



- Now playing : To check the file currently playing.
- FM Radio : To listen to FM radio.
- Navigation : To move to Navigation Mode and browse files and folders.
- Playlist : To play back only the files you want
- Settings : To set the functions (refer to page 40).
- Exit : To exit MENU.

Note

- Menu mode will be cancelled if no buttons are pressed within 15 seconds



Using Navigation

You can easily search for files or switch modes using the Navigation function.

1 Press the "M" button to enter Navigation mode.
(except if you are in FM radio mode).
or press and hold the "M" button to move to Menu and then select Navigation in Menu.

2 Select the file or folder that you want to play.

- : When moving to a higher-level folder.
- : When moving to a lower-level folder.
- : When moving to a file or folder in the same directory.
- : Move to the next folder down. When there is not a lower folder, the selected file will be designated as part of the playlist.

3 Press the button.

- The selected file will be played.



Note

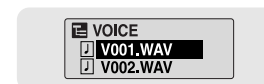
- Press and hold the "M" button in Navigation mode to exit the Navigation mode.
- Root is the lowest level of memory where files are stored. It is similar to the C drive on your PC.

Using Navigation

Changing Mode

You can change the mode in the following method.
Ex) To change from the Voice mode to the Music mode

1 Press the "M" button in the Voice mode.

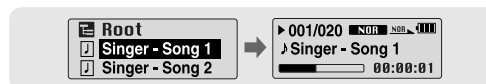


2 Use to move to the upper folder.



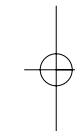
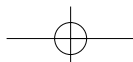
3 Use to move to the music file you want and press the button.

- As it is changed to the Music mode, the selected file will be played.



Note

- To change to the FM mode, refer to "Menu Options".



Using Navigation

Playing/Exiting Folder

▶ Playing Folder

1 Press the "M" button to move to the Navigation mode.

2 Use **-**, **+** to move to the folder you want and press the **▶||** button.


- When "  " appears, the selected file will be played.



▶ Exiting Folder Play

1 Press the "M" button during folder playback to move to the Navigation mode.

2 Use **-**, **+** to move to the file you want and press the **▶||** button.

- After folder play is exited, "  " mark will appear and the selected file will be played.



Setting Playlist

Setting Playlist

- Move to the file you want in Navigation mode and press the "M" button.

- The selected file will be marked.
- To exit the playlist setting, move to the marked file in Navigation mode and press the "M" button again.




Playing Playlist

1 Press and hold the A↔B button in music mode or select Playlist in Menu.

- The playlist you set will be displayed.

2 Move to the file you want to play and press the **▶||** button.

- "  " mark appears and the selected file will be played.

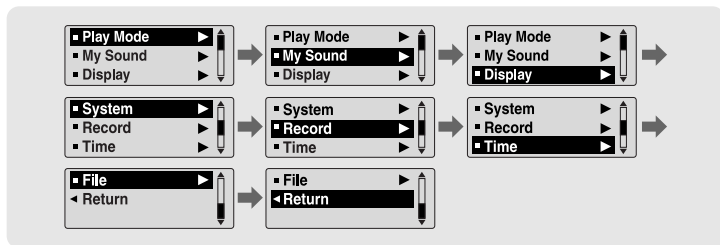


Setting the Advanced Functions

1 Select Settings in the MENU. (refer to "MENU Options")

2 In Settings, use **-**, **+** to move to the function you want and press the "M" button to select.

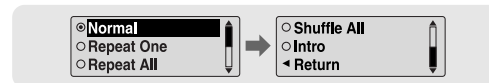
● To move to a previous menu, use **⏪** or select Return.



Selecting the Play mode

1 Press and hold the "M" Button. Select Settings → Play Mode.

2 In Play mode, use **-**, **+** to move to the mode you want and press the "M" button to select.



- Normal: To play all the tracks in order one time.
- Repeat one: To repeat one track.
- Repeat all: To repeat all tracks.
- Shuffle: To play tracks at random.
- Intro: To listen to the first part of all saved tracks for 10 seconds.
- Return: To move to a previous menu

Setting the EQ mode

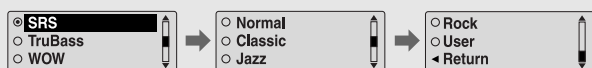
1 Press and hold the "M" button. Select Settings → My Sound.

2 In My Sound, use **←, →** to move to the sound mode you want and press the "M" button.



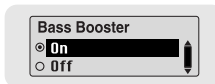
Preset EQ

- Use **←, →** to move to the sound mode you want and then press the "M" button.
- **SRS** → **TruBass** → **WOW** → **Normal** → **Classic** → **Jazz** → **Rock** → **User**
- Select User EQ Set to set the EQ as desired.



Bass Booster

- Use **←, →** to select Bass Booster On or Off and then press the "M" button.
- Bass Booster function is applied only when you select Normal, Classic, Jazz or Rock in the Preset EQ.
- **On**: When the music is played back, the bass is enhanced in the preset sound.
- **Off**: Music is played back in the preset sound.



Setting the EQ mode

WOW Set

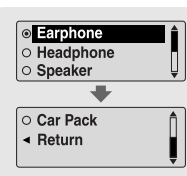
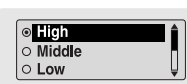
- Use **←, →** to select the SRS function you want and then press the "M" button.
- The SRS function is applied only when you select the SRS, TruBass or WOW in the Preset EQ.

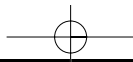
- **SRS** : You will hear 3D Stereo sound.
Use **←, →** to adjust SRS from 0 to 10.
- **TruBass** : This is a bass boost feature that adds fullness to the sound.
Use **←, →** to adjust TruBass from 0 to 10.
- **Focus** : You can enjoy clearer tone during playback.
Use **←, →** to set Focus and then press the "M" button. The chosen frequency band will be boosted.

High → **Middle** → **Low**

- **Optimum** : Optimize the SRS function according to the device connected to the main unit.
Use **←, →** to move to the connected device and then press the "M" button.

Earphone → **Headphone** → **Speaker**
→ **CarpacK(Car Cassette Adapter)**



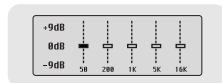


Setting the EQ mode

Display Settings

User EQ Set

- If User is selected in Preset EQ, EQ can be set to your preference in the User EQ Set.
- Use **◀▶** to move to right or left and use **-**, **+** to adjust the level.
Press the "M" button after completing the setting.



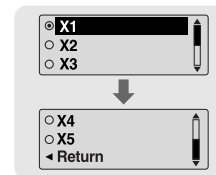
Note

- **SRS** is a trademark of SRS Labs, Inc. WOW technology is incorporated under license from SRS labs, Inc..
- Please adjust the volume to a suitable level, as the volume may increase in the SRS setting.
- This unit supports sampling frequencies of 32KHz, 44.1KHz or 48KHz.
- The SRS function is not set for voice recording files.

Press and hold the "M" button. Select Settings → Display

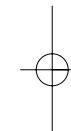
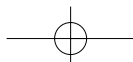
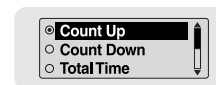
Scroll Speed

- Use **-**, **+** to set the scroll speed from X1 to X5 to adjust the speed of the track title movement.



Display Time

- Use **-**, **+** to select the display time.
- Count Up: Current playback time is displayed.
- Count Down: Remaining time from total playback time is displayed.
- Total Time: Total playback time is displayed.




Display Settings

Display Settings

Press and hold the "M" button. Select Settings → Display

▶ Backlight

[Jog]

- Use **←, →** to set the  Light-On time from Off to 60 seconds.
- When set to On, the Light stays on continuously.



[LCD]

- Use **←, →** to set the LCD Light-Off time from Off to 60 seconds
- When set to On, the Light stays on continuously.



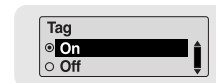
▶ Contrast

- Use **←, →** to set the contrast level from 0 to 10.



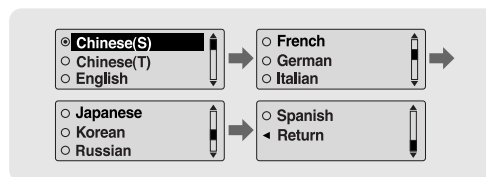
▶ Tag

- Use **←, →** to select Tag On or Off.
- On: Display the Tag information if the music file has Tag information. Display the file name if the music file has no Tag information.
- Off: Display the name of music file.



▶ Language

- Use **←, →** to select the language for displaying Tag information and menu.
- Chinese(S) → Chinese(T) → English → French → German → Italian → Japanese → Korean → Russian → Spanish

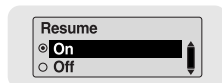


Setting the System

Press and hold the "M" button. Select Settings → System.

▶ Resume

- Use **←, +** to select Resume On or Off.
- On: Play back will resume from the point it was previously stopped.
- Off: Play back will resume from the beginning of the file/track that was playing when stopped.



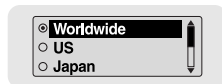
▶ Default vol

- Use **←, +** to set the default volume to a level between 0 and 30.
- If the power is turned on again after having adjusted the volume to a level above the default volume (for example: 20) music is played at the default volume level.
- If the power is turned on again after having adjusted the volume at or below the default volume (for example: 20 or lower), the music is replayed at the previous volume.



▶ Tuner Region

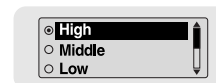
- Use **←, +** to select FM Tuner Region.
- Worldwide : Search FM frequency between 88.0MHz to 108.00MHz in increments of 50 KHz.
- US : Search FM frequency between 88.0MHz to 108.0MHz in increments of 100 KHz.
- Japan : Search FM frequency between 76.0MHz to 108.0MHz in increments of 100 KHz.



Setting the System

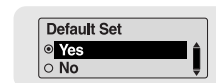
▶ Tuner Level

- Use **←, +** to select FM Tuner Sensitivity.
- The higher the FM Tuner Sensitivity, the more frequency it can receive .
- **High** → **Middle** → **Low**



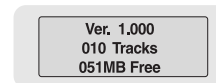
▶ Default Set

- Use **←, +** to select Default Set Yes or No.
- Yes : All settings selected will revert back to the player default settings.
- No : All settings selected will remain as they are.



▶ About

- If you select About, you can check the software version information, total number of tracks and remaining capacity.



Note

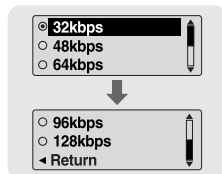
- Go to samsung.com for software updates.

Record Settings

Press and hold the "M" button. Select Settings → Record.

▶ Bitrate

- Use **—**, **+** to set the encoding bit rate.
- When encoding music into an MP3 file, you can select one of the following bit rates: 32Kbps, 48Kbps, 64Kbps, 96Kbps and 128Kbps.



▶ AutoSync

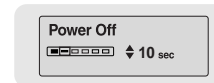
- Use **—**, **+** to set the AutoSync Time from 1 to 5 seconds.
- AutoSync Time is a function for separating and saving MP3 files when there is no sound for a set time during MP3 encoding.
- In SYNC 1 setting, encoding stops and it moves to Music Mode when there is no sound for over 1 second during encoding.
- If AutoSync Time is set to Off, encoding keeps going even if there is no sound, and then it is saved as one file.

Time Settings

Press and hold the "M" button. Select Settings → Time

▶ Power Off

- Use **—**, **+** to set the Power-Off time from 0 to 3 minutes.
- If no button is pressed after play stops, the player will automatically turn off after the time you set.
- When set to Off, it will not turn off automatically.



▶ Auto Sleep

- Use **—**, **+** to set the Sleep time to 15, 30, 60, 90, or 120. The player will automatically turn off after the time you set.
- When set to Off, it does not turn off automatically.



▶ Intro Time

- Use **—**, **+** to set the Intro time to 10, 20, 30, or 60 seconds.
- When you select the Intro function (Press and hold "M" button. Select Settings → Play mode → Intro), the beginning of all files will be played back for the seconds you set.

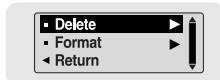


Managing Files

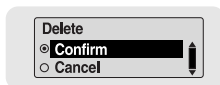
MENU Table

Deleting

1 Press and hold the "M" button.
Select Settings → File → Delete.



2 Use **-**, **+** to move to the file you want to delete and then press the "M" button.

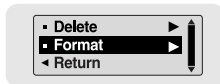


3 Use **-**, **+** to move to Confirm and then press the "M" button.

- The selected file will be deleted.

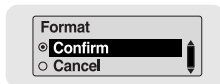
Formatting the player

1 Press the "M" button. Select Settings → File → Format



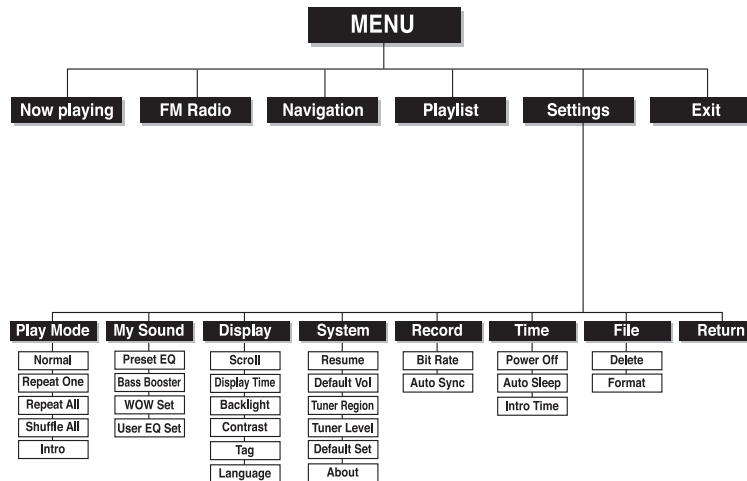
2 Use **-**, **+** to move to Confirm and then press the "M" button.

- The player will be formatted.



Note

- All files will be deleted when formatting the built-in memory.
- It is recommended that formatting be carried out on a PC that has the provided program installed as formatting in the Menu may take a long time.



- Use the button to move and select.

Troubleshooting

The software doesn't work

- Refer to the System Requirements

The player does not work and the LCD displays nothing.

- Check the battery capacity
- Check to see if the battery is inserted to the right poles (+ , -)
- After connecting it to PC, execute YP-T6 Updater in the desktop to update the product.

In PLAY mode, music is not played after pressing the ►|| button

- Check to see if MP3 or WMA files are saved in the built-in memory.
- Check to see if the HOLD button is locked.

Files cannot be downloaded.

- Check to see if the driver is installed correctly in the computer.
- Check the connection between the player and PC.
- Check and/or replace the battery, turn on the play's power.
- Operating system limits the number of files you can save.
Please save your music files by creating a subfolder.
- Check if the memory is full.

Backlight does not work.

- Check the backlight setup.
- When the battery power is low, the backlight will go out.

The buttons do not work.

- Check setting of Hold switch.
- Remove the battery once and then insert it again.

Troubleshooting

The player keeps being turned off.

- In Stop mode, the power is automatically turned off after ten seconds (changes depending on settings).
- Check to see if there are files saved in it.

Something's wrong with play time displayed during Play mode.

- "VBR SONG" message is displayed while VBR (Variable Bit Rate) file is playing.

LCD window is dark

- Check Contrast

The file name is not displayed correctly.

- Move to [Settings] → [Display] → [Language] in the Menu and then change the language setting.

There is a file saved in the player, but "No File" appears in the screen.

- After checking whether the folder is played, use the Navigation function to change the folder.
- After connecting it to PC, execute YP-T6 Updater in the desktop to update the product.

I cannot properly connect the player to the PC.

- Win98 : try to connect again after installing Driver.
- WinME : remove the Driver program and press the Start in the desktop to execute Windows Update. After selecting important update and service pack, execute update all.
- Win2000/XP : Try to connect it again after rebooting PC.

Specifications

Model	YP-T6
Built-in Memory capacity	128MB(YP-T6 H), 256MB(YP-T6 V), 512MB(YP-T6 X), 1GB(YP-T6 Z)
Voltage	1.5V X 1 (AAA/LR03 size alkaline battery)
Playing time	lasts up to 20hours (Alkaline battery, MP3 128Kbps, Vol level 15)
Dimensions/Weight	0.86" X 2.16" X 0.90" / 1.06oz (without battery)
Case	Plastic/Aluminum
Noise Ratio	89dB with 20KHz LPF
Earphones Jack Output Power	10mW/CH (16Ω)
Output Frequency Range	20Hz~20KHz
Operating Temperature Range	-5 ~ +35°C(23~95°F)
FM Frequency	87.5 ~ 108.0 MHz
FM Signal to Noise Ratio	62dB
FM T.H.D	1%
FM Useable Sensitivity	10dB
File Support	MPEG1/2/2.5 Layer3(8Kbps ~ 320Kbps, 8KHz ~ 48KHz) WMA, ASF (48Kbps ~ 192Kbps, 8KHz ~ 48KHz), Ogg

The product unit accompanying this user manual is licensed under certain intellectual property rights of certain third parties. In particular, this product is licensed under the following US patents : 5,991,715, 5,740,317, 4,972,484, 5,214,678, 5,323,396, 5,539,829, 5,606,618, 5,530,655, 5,777,992,6,289,308, 5,610,985, 5,481,643, 5,544,247, 5,960,037, 6,023,490, 5,878,080, and under US Published Patent Application No. 2001-44713-A1.

This license is limited to private non-commercial use by end-user consumers for licensed contents.

No rights are granted for commercial use. The license does not cover any product unit other than this product unit and the license does not extend to any unlicensed product unit or process conforming to ISO/IEC 11172-3 or ISO/IEC 13818-3 used or sold in combination with this product unit. The license only covers the use of this product unit to encode and/or decode audio files conforming to the ISO/IEC 11172-3 or ISO/IEC 13818-3.

No rights are granted under this license for product features or functions that do not conform to the ISO/IEC 11172-3 or ISO/IEC 13818-3.

SAMSUNG
ELECTRONICS

Samsung Limited Warranty

Samsung Electronics Canada Inc. (SECA), warrants that this product is free from defective material and workmanship.

SECA further warrants that if this product fails to operate properly within the specified warranty period and the failure is due to improper workmanship or defective material SECA will repair or replace the product at its option.

All warranty repairs must be performed by a SECA authorized service centre. (The name and address of the location nearest you can be obtained by calling toll free 1-800-726-7864 or visiting our web site at www.samsung.ca)

Labour
one (1) year (carry-in)

Parts
one (1) year

On carry-in models, transportation to and from the service centre is the customer's responsibility.

The original dated sales receipt must be retained by the customer and is the only acceptable proof of purchase. It must be presented to the authorized service centre at the time service is requested.

Exclusions

This warranty does not cover damage due to accident, fire flood and/or other acts of God; misuse, incorrect line voltage, improper installation, improper or unauthorized repairs, commercial use, or damage that occurs in shipping. Exterior and interior finish, lamps and glass are not covered under this warranty. Customer adjustments which are explained in the instruction manual are not covered under the terms of this warranty. This warranty will automatically be voided for any unit found with a missing or altered serial number. This warranty is valid only on products purchased and used in Canada.